

What to expect after the procedure

- Some local discomfort may be experienced.
- Nerve stimulator may provide abnormal sensations, which your body adjusts to.
- A Representative from Medtronic will be in contact with you to check on your settings and responses.
- A review at SAWMH with Medtronic will be scheduled at 3 months, to confirm that the device is functioning optimally
- Further review appointments will be scheduled as required
- The battery should last between 7-10 years
- NB! Each person is unique and for this reason symptoms may vary!



See this live on:
vidscrip.com/urojo

Jo Schoeman
FRACS, FCS (Urol) SA, MBChB

The Wesley Hospital
Suite 10 Level 9
Evan Thompson Building
24 Chasely Street
AUCHENFLOWER QLD 4066

Ph: 07) 3371-7288
Fax: 07) 3870-5350
E-mail: jo@urojo.com.au
Emerg: 0403 044 072

www.brisbane-urologist.com.au

Urologist



Dr Jo Schoeman
Specialist Urologist

**PATIENT
INFORMATION
BROCHURE**

**FULL
IMPLANT**

***SACRO
NEURO
MODULATION***

**PERMANENT
LEADS
&
IMPLANT**

Patient well-being is my first priority!

What next?

- A date will be set for a review by myself and Medtronic on regular intervals
- Please don't hesitate to direct all further queries to Dr Schoeman's rooms.

Full implant Sacro Neuro Modulation

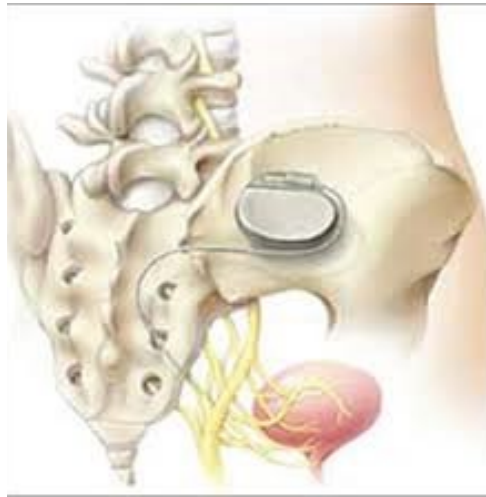
The aim is to alter the neuro-transmission from the Spinal Centre to the Bladder:

Why is it done?

- Incomplete Bladder emptying, large post void residual urine volumes
- Under Active Bladders
- Chronic Pelvic Pain
- Causative factors:
Undetermined
Neurogenic causes such as Multiple Sclerosis, Diabetes

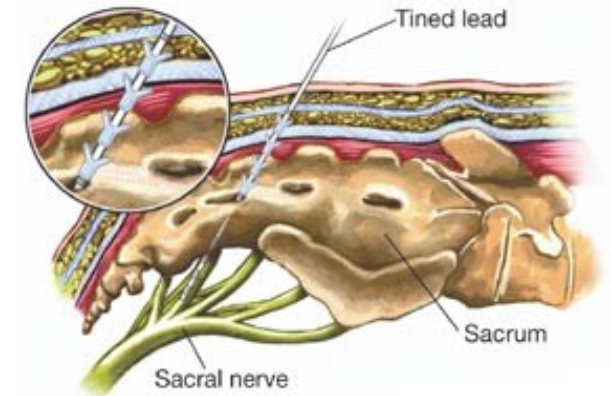
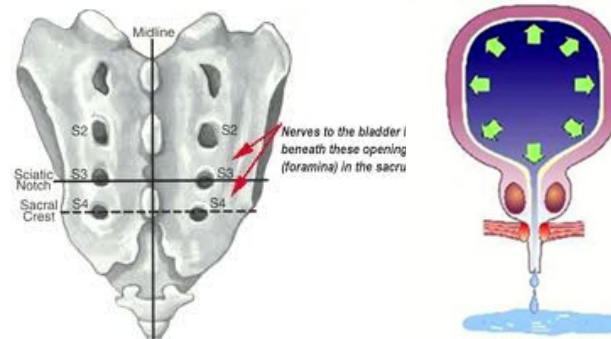
Pre-requirements

- An informed consent is required from the patient .
- Patients may not eat or drink from midnight the previous evening
- Patients are to refrain from smoking before the procedure.
- **Patients allergic to IODINE/CHLORHEXIDINE should clearly state this at pre-admission clinics as well as to theatre staff and Dr Schoeman**
- This is usually a day surgery procedure unless travelling from further than Brisbane
- Should not be on any anti-coagulation: Asprin, Plavix, Warfarin.



How is the permanent lead placement done?

- A sedation is administered with local anaesthetic
- You will be placed prone (on your stomach) with lower back and buttocks exposed
- The tined lead will be placed in the S3 foramina of the sacrum under imaging
- The lead will be tunneled under the skin and connected to an Internal Battery
- A pocket will be made for the permanent subcutaneous battery and connection
- Subcutaneous sutures will be placed, which will dissolve.



Post-operative care

- You will be given a remote device to control your settings
- It is not required that you fiddle with this, unless you do not have the desired effects
- The remote allows you to access 4 initial programs to switch between, to attain the desired effects
- The Medtronic representative is a phone call away. (mobile number provided in the lid of your device box) You would have received clear instructions as to the use prior to discharge
- A further 3 programs can be programmed should the initial 4 not be useful
- The device is simple to operate, don't be scared, you won't disrupt anything

