

What next?

- Dressings should be kept dry for the initial 72 hours after surgery and soaked off in a bath thereafter.
- The dressing may sometimes adhere to the wound causing slight bleeding on removal. Don't panic, the bleeding will stop.
- The catheter will be removed as soon as you are awake, or if there are concerns, the following morning.
- On discharge, a prescription may be issued for patients to collect.
- Patients should schedule a follow-up appointment with Dr Schoeman 2 weeks after the procedure.
- There will be signs of bruising for at least 10 days.
- Refrain from using your erect penis for 3-4 weeks
- The suture-line will be hard and indurated for at least 8-10 weeks.
- Sick leave will be granted for 10 days.
- Please direct all further queries to Dr Schoeman's rooms.
- **PLEASE CONTACT THE HOSPITAL DIRECT WITH ANY POST-OPERATIVE CONCERNS AND RETURN TO THE HOSPITAL IMMEDIATELY SHOULD THERE BE ANY SIGNS OF SEPSIS.**

Jo Schoeman
FRACS, FCS (Urol) SA, MBChB

The Wesley Hospital
Suite 10 Level 9
Evan Thompson Building
24 Chasely Street
AUCHENFLOWER QLD 4066

Ph: 07)3371-7288
Fax: 07) 3870-5350
E-mail: jo@urojo.com.au
Emerg: 0403 044 072

www.brisbane-urologist.com.au

Urologist



Dr Jo Schoeman
Specialist Urologist

**PATIENT
INFORMATION
BROCHURE**

***PENILE
FRACTURE
REPAIR***

See this live on:
vidscrip.com/urojo

Patient well-being is my first priority!

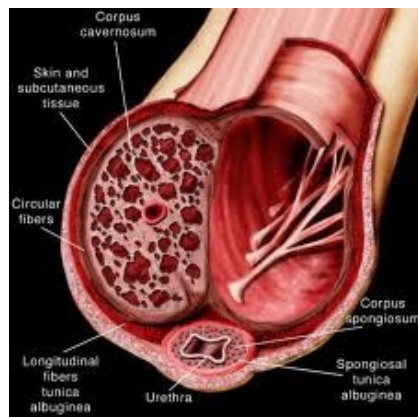
Penile Fracture Repair

How does this occur?

- Classically seen in guys turning over onto an erect penis in their sleep
- Vigorous sex where the erect penis slips out and is re-inserted outside the desired orifice, causing a bend in the Corpora Cavernosa with a snap sound signifying a tear of the CC
- Occurs at any age
- Sudden severe swelling of penis turning blue, looking like an eggplant.
- Pain occurs at the time of incident.
- This requires acute attention, therefore make your way to an Emergency department as soon as possible.

What to do?

- **URGENT.**
- **Make your way to ED ASAP**

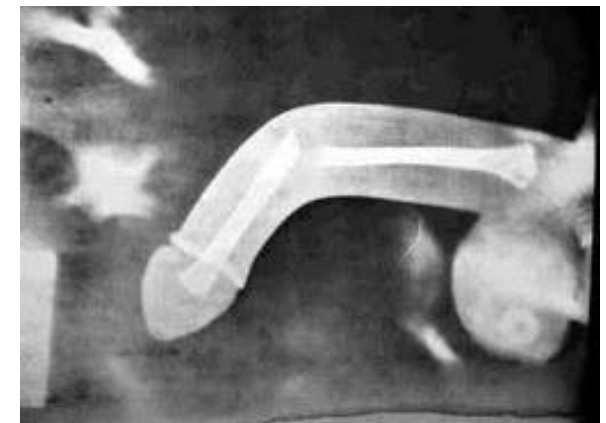


How is it fixed?

- This fixed under general anaesthetic.
- Supine position (on your back), sterile procedure.
- An ultrasound is done to isolate the tear in the Corpora
- An incision is done over the isolated spot.
- The corpora is sutured with non dissolving sutures
- The Foreskin is loosened proximal to the glans with a circumferential incision and the whole penile skin is retracted to the base of the penis when the fracture site can not be isolated.
- Occasionally a circumcision may result due to complications with this technique, yet foreskin preservation is attempted.
- A in catheter will be inserted until the swelling is better.
- A dressing is then applied, which should be removed after 72 hours.

What to expect after the procedure?

- Any anaesthetic has its risks and the anaesthetist will explain such risks.
- Bleeding is a common complication.
- A haematoma (blood collection under the skin) is present and will take some time to settle. Bruising is normal.
- Sutures may tear loose with vigorous use of erect penis, and the procedure may then require revision.
- An infection of the wound may occur and requires immediate attention.
- Necrosis of the foreskin can occur in rare circumstances.
- **DANGER SIGNS:** A wound that swells immediately, fever, and puss. Contact Dr Schoeman or the hospital immediately as this occurs in up to 15–20% of all cases.



Note:

The penis has no bones in it, this is a joke